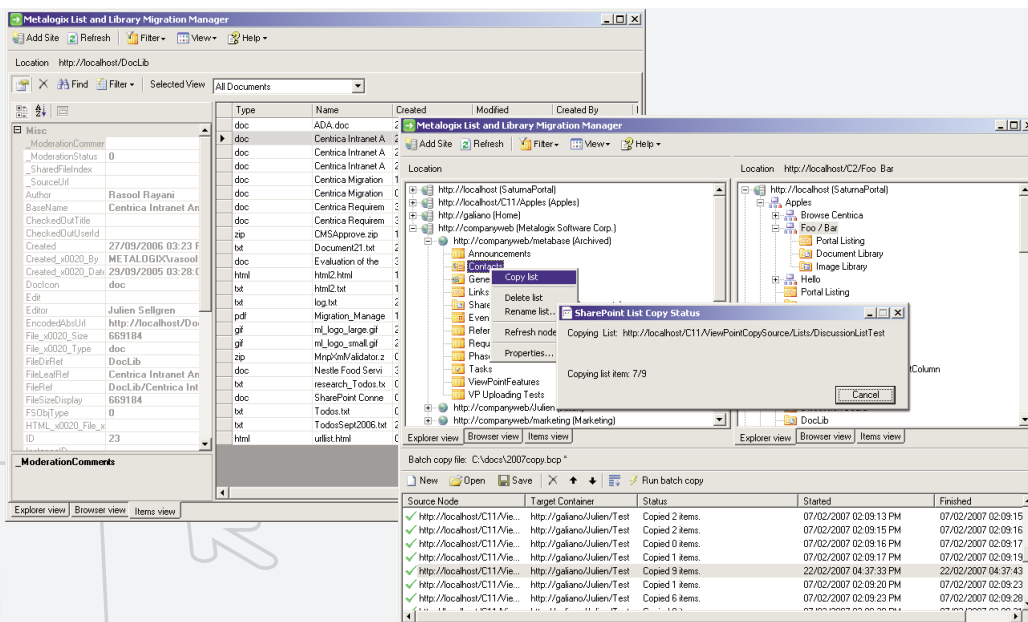


SharePoint Site Migration Manager



Migrate SharePoint sites, permissions, web parts, and list and library content between servers



Business Benefits

- > Reduce migration costs by up to 90%
- > Upgrade from SharePoint 2003 to SharePoint 2007
- > Avoid data loss when migrating between servers
- > Re-organize or re-template your SharePoint content
- > Manage your upgrade with zero downtime

Supported Source Systems

- > Microsoft SharePoint Portal Server 2003
- > Microsoft Windows SharePoint Services 2.0
- > Microsoft Office SharePoint Server 2007
- > Microsoft Windows SharePoint Services 3.0

Key Features

> Easy to use

Similar to the windows file explorer, SharePoint Site Migration Manager has a familiar, tree-based, copy-and-paste-style user interface.

> Migrate site hierarchies

Complete SharePoint site hierarchies can be migrated in one easy step. Replicate or re-parent site structures, move list and library content, and map content to new site and list templates.

> Migrate all list types and web parts

Document Libraries, Page Libraries, Surveys, Issues, Tasks, Contacts, Announcements, Discussions and Custom Lists can all be migrated while preserving views, metadata, and user-edit information.

> Retain valuable metadata and permissions

All views, version chains, metadata, and user-edit information may be preserved. Easily remap or replicate permissions.

> Connect to multiple sites and servers

Connect to multiple SharePoint sites, across any number of servers, for easy consolidation, or distribution of your SharePoint data.

> Work remotely

Do all the heavy lifting for your SharePoint migration from the convenience of your own machine. Migration Manager connects to any SharePoint site that you can access with your browser – even those outside your organization's intranet.

> Batch your work

Multiple migration operations can be batched up for convenience, and re-run at any time. Run your migrations at night and view the results / logs in the morning.

> Compliant

All migration activity is done through the supported SharePoint API's. There are no un-supported, direct writes to the SharePoint database.

For additional info,
please contact us directly
at info@metalogix.net or
call 604-677-4636 (INFO).

**Sign up at www.metalogix.net
to receive an evaluation copy.**

metalogix

Content Migration Solutions