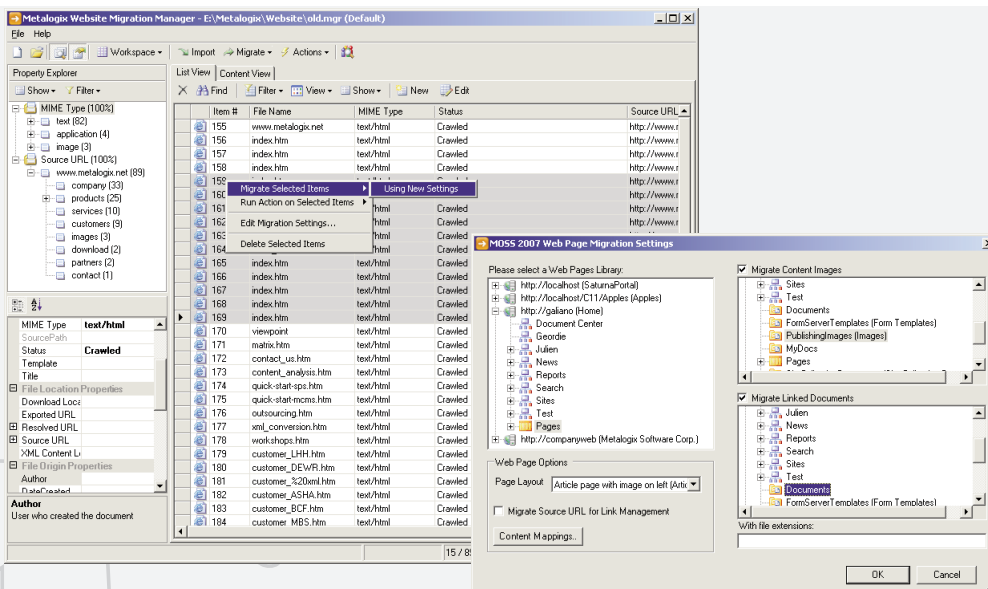


# Migration Manager

Accelerate your migration to the SharePoint 2007 web content management platform



## Business Benefits

- > Reduce migration costs by up to 90%
- > Maximize your investment in existing website and document content
- > Accelerate the process of moving to the SharePoint 2007 web content management platform
- > Avoid a labour intensive, time consuming, copy and paste style website migration

## Key Features

- > Crawl and inventory your site
- > Analyze your existing content
- > Map site hierarchies
- > Extract and map HTML regions
- > Migrate Related Images and Documents
- > Auto-correct of links within migrated content
- > Develop custom transformations

# Key Features

## > **Crawl and inventory your site**

The first step in a website migration is knowing what you have. Migration Manager allows you to quickly generate a complete list of all the HTML pages, and related resources on your site. Crawl static sites and enterprise content management systems such as: Vignette, Interwoven, IBM, Tridion, Stellent, and MCMS 2002 as well as many other third party systems.

## > **Analyze your content**

Powerful filtering, sorting, and visualization tools allow you to identify the important aspects of your existing website: Discover all of your content types, page templates, and site hierarchies.

## > **Map site hierarchies**

Your existing site hierarchy can be mapped to your new site hierarchy within Migration Manager, or you can choose to auto-generate the target hierarchy based on your existing one.

## > **Extract and map HTML regions**

Extract all key HTML regions from within your HTML pages, such as titles, abstracts, body's and images using a powerful, visual tagging tool. A single extraction rule can be re-used across thousands of similar pages.

## > **Manage links**

Save hundreds of hours of post-migration, manual content cleanup: Migration Manager allows you to automatically correct all links within migrated HTML content.

## > **Migrate related images and documents**

Related resources such as images and documents can be migrated along with HTML pages, and copied to an image or document library within SharePoint.

## > **Develop custom business logic**

For complex migration scenarios, Migration Manager has a built-in actions framework, allowing developers to write custom business logic, importers and exporters.

For additional info,  
please contact us directly  
at [info@metalogix.net](mailto:info@metalogix.net) or  
call 604-677-4636 (INFO).

**Sign up at [www.metalogix.net](http://www.metalogix.net)  
to receive an evaluation copy.**

**metalogix**

Content Migration Solutions